

PEI Regulatory Approach to Management of Petroleum Contaminated Sites

Past, Present & Future

Danny McInnis

Halifax, January 25 2007

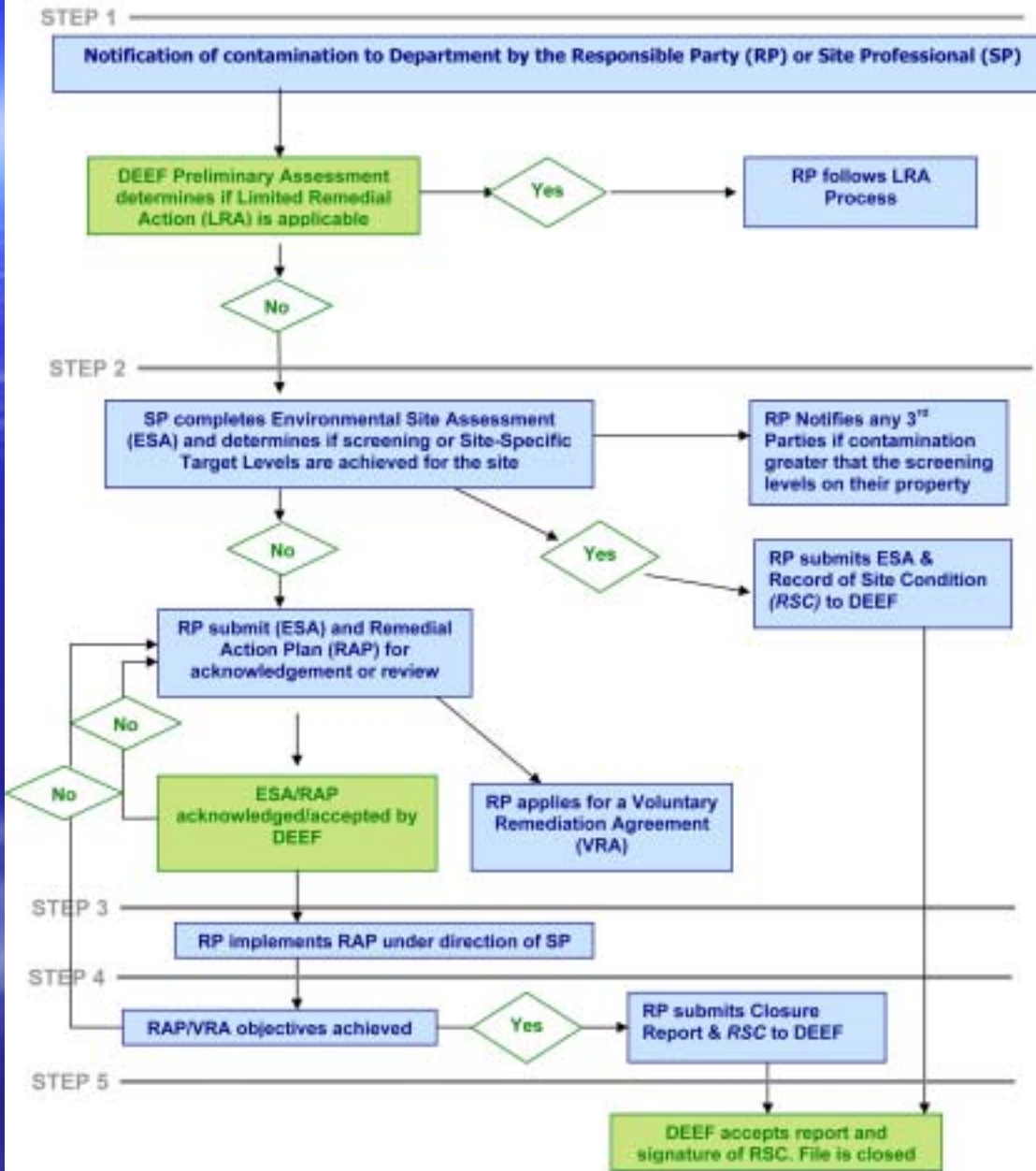
Background Leading to Regulations

- We had the technical tool (RBCA V.2)
- We had amended the *Environmental Protection Act* (EPA) legislation in 2004 that permits us to develop remediation regulations.
- We consulted with the APIRI Committee on drafted version of regulations.
- Effective November 25, 2006, the regulations came into effect.

Guidelines versus Regulations

- Courts do not view provincial guidelines as legally enforceable documents
- The Petroleum Hydrocarbon Remediation Regulations gives the guidelines “force of law.”

DEEF's PHRR IMPLEMENTATION PROCESS



Highlights of Step 1 in Regulation Implementation Process

- Step 1 – Notification, Preliminary Assessment & LRA
- Step 2 - ESA & RAP Planning
- Step 3 - RAP Implementation
- Step 4 - SP Requests Site Closure
- Step 5 - Department's Response to Closure Request

Contaminated Site Registry

PEI's New Contaminated Site Management Tool

NEED

Transparent Process to notify of *Unacceptable Risk*

- Excessive contamination not being remediated in accordance with the Petroleum Hydrocarbon Remediation Regulations.
- Excessive concentration of any non-petroleum substance present at the site is greater than CCME.
- The site, or a portion of the site has an inactive landfill located on it.

Transparent Process to notify of Potential Unacceptable Risk

- Petroleum Hydrocarbon Remediation Regulations, where a risk assessment identifies an unacceptable risk with the petroleum hydrocarbon concentration present at a site, allows a risk management plan that could involve land use restrictions requirements to ensure that human health or environmental objectives are achieved

Contaminated Site Registry

Department enters Site Registry

Registry
soon
available
online, no
user fees

The screenshot shows the InfoPEI website interface. At the top, there are navigation tabs for Government, InfoPEI, Business, Employment, and Visiting the Island. Below these is a search bar with 'InfoPEI' selected and a 'Search' button. A 'Printer Friendly' icon is visible in the top right corner. The main heading is 'InfoPEI' followed by a breadcrumb trail: 'HOME / TEST WEBSITE -DIRECTORY / CONTAMINATED SITE REGISTRY /'. The primary section is titled 'Contaminated Site Registry' and includes the text: 'THIS PAGE WILL ASSIST YOU in locating and finding more information about a Prince Edward Island civic address that is in the Contaminated Site Registry.' Below this is a form section titled 'Enter a Parcel Identifier (PID)' with a text input field and a 'Find this Parcel' button. A link for 'Click here to make corrections to this information.' is provided. A 'PLEASE NOTE' section explains that the information is not an endorsement and is updated to correct errors. The footer contains the text: 'The Official Website of the Government of Prince Edward Island, Canada. Please read our Copyright and Privacy Policies.'

Government InfoPEI Business Employment Visiting the Island

InfoPEI Search

Printer Friendly

HOME / TEST WEBSITE -DIRECTORY / CONTAMINATED SITE REGISTRY /

Contaminated Site Registry

THIS PAGE WILL ASSIST YOU in locating and finding more information about a Prince Edward Island civic address that is in the Contaminated Site Registry.

Enter a Parcel Identifier (PID)

Enter a parcel identifier (PID number) to search the contaminated site registry for information associated with that parcel of property.

Enter PID Number:

Find this Parcel

[Click here to make corrections to this information.](#)

PLEASE NOTE: The inclusion of or reference to any business or organization in InfoPEI is not meant to be an endorsement by the Government of Prince Edward Island of the services offered by any particular business or organization. Further, the Government of Prince Edward Island advises that individual entries are based on information supplied by the business or organization in question. Therefore, while InfoPEI is updated to correct errors as appropriate, the Government of Prince Edward Island does not warrant that the information is accurate.

The Official Website of the Government of Prince Edward Island, Canada.
Please read our [Copyright and Privacy Policies](#).

Contaminated Site Registry

Registry Search Results

Prince Edward Island

Government InfoPEI Business Employment Visiting the Island

InfoPEI Search

Printer Friendly

HOME / TEST WEBSITE - DIRECTORY /

Contaminated Site Registry

THIS PAGE WILL ASSIST YOU in locating and finding more information about a Prince Edward Island civic address that is in the Contaminated Site Registry.

Enter a Parcel Identifier (PID)

Enter a parcel identifier (PID number) to search the contaminated site registry for information associated with that parcel of property.

Enter PID Number:

Find this Parcel

Results of a search for Property ID 542555

Date entered in registry	Comments	Property Documentation
3/10/2006	As per Section 12(2) of the Petroleum Hydrocarbon Remediation Regulations, the Department issued conditional closer imposing limitations on redevelopment of this parcel.	map2006.pdf

For more detailed environmental information on this and other properties, interested persons may apply under the [Environmental Records Review Regulations](#)

Gov. Home

- Arts, Culture and Heritage - DEY
- Business, Technology and Immigration
- Churches
- Consumer Information
- Education and Learning
- Emergency
- Employment
- Environment and Land
- Government
- Law and Justice
- Health
- Life on the Island
- Media and Communications
- Moving to Prince Edward Island
- Nature, Animals and Plants
- Primary Resources
- Reference
- Seniors
- Service Organizations
- Statistics
- Transportation
- Travel and Vacation
- Sports & Recreation

Prince Edward Island Environment, Energy and Forestry

Regulatory Advantages

- Flexible for regulator i.e., specific directives, now chargeable offences.
- Clarity for Responsible Party and Site Professional.
- More complete contaminated site implementation system i.e., means to ensure RMP are implemented
- Numbers are good.