

Contaminated Site Registry

**Province's New Contaminated Site
Management Tool**

NEED for Transparent Process

NEED

Transparent Process to notify of *Unacceptable Risk*

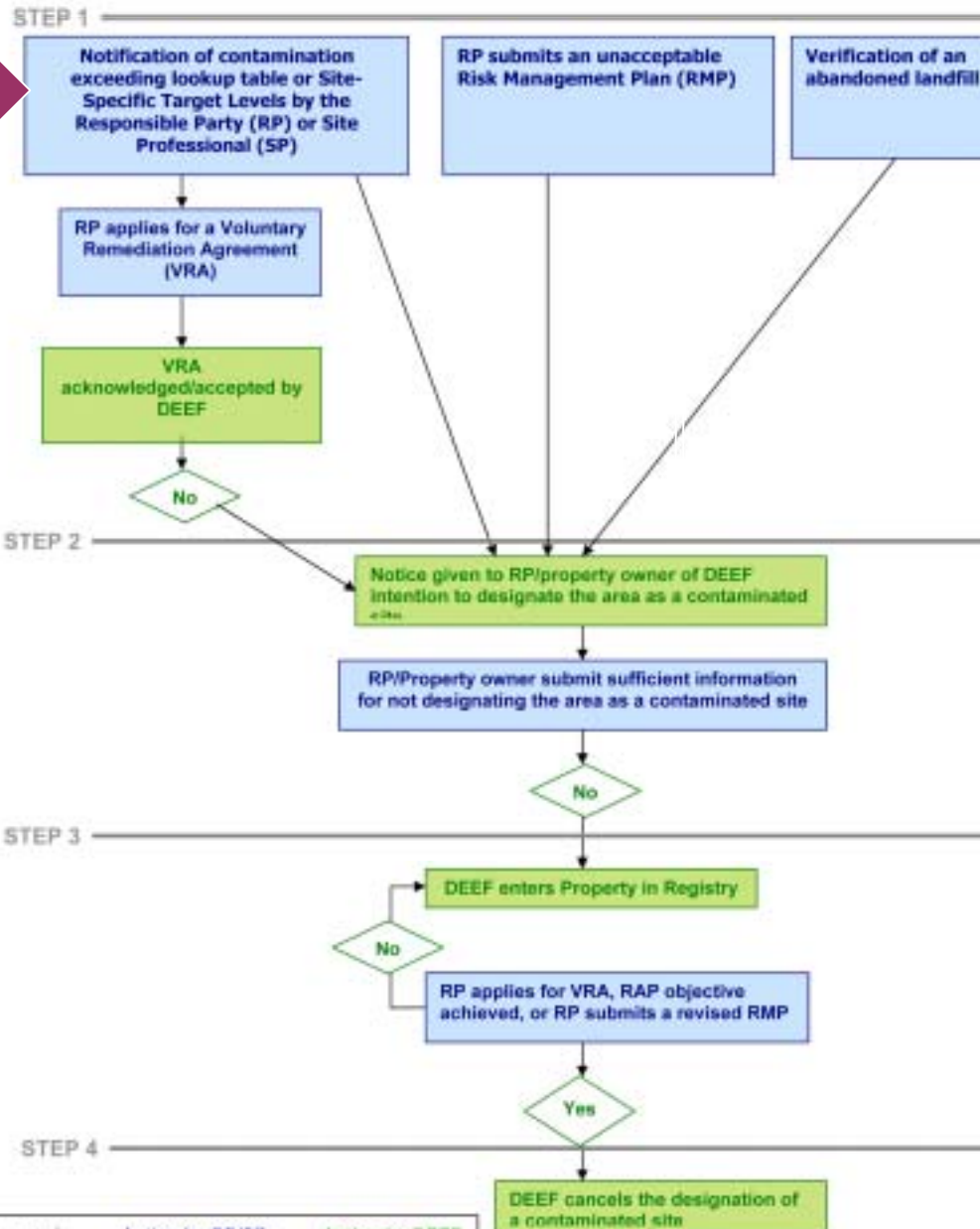
- Excessive contamination not being remediated in accordance with the Petroleum Hydrocarbon Remediation Regulations.
- Excessive concentration of any non-petroleum substance present at the site is greater than CCME.
- The site, or a portion of the site has an inactive landfill located on it.

Transparent Process to notify of Potential Unacceptable Risk

- Petroleum Hydrocarbon Remediation Regulations, where a risk assessment identifies an unacceptable risk with the petroleum hydrocarbon concentration present at a site, allows a risk management plan that could involve land use restrictions requirements to ensure that human health or environmental objectives are achieved

HOW

DEEF's CONTAMINATED SITE REGISTRY PROCESS



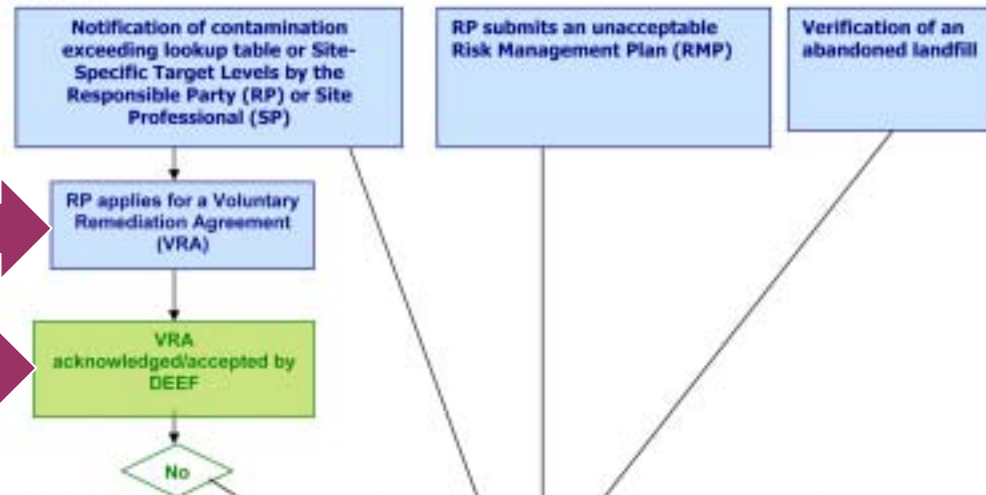
Highlights of Step 1 in Regulation Implementation Process

Notification Examples for CR entry

- ***Example #1*** - ESA determines screening or Site-Specific Target Levels are exceeded, and
 - an unacceptable RAP or no RAP submitted; or
 - the extent of the impacts require prolonged corrective actions.
- ***Example #2*** - RMP involves institutional controls, and the Department's request was not abided to for the placement of a Covenant with the Registry of Deed for the property indicating these controls
- ***Example #3*** - Verification of an inactive landfill located on site.

DEEF's CONTAMINATED SITE REGISTRY PROCESS

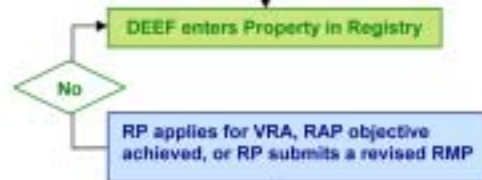
STEP 1



STEP 2



STEP 3



STEP 4

DEEF cancels the designation of a contaminated site

Legend Action by RP/SP Action by DEEF

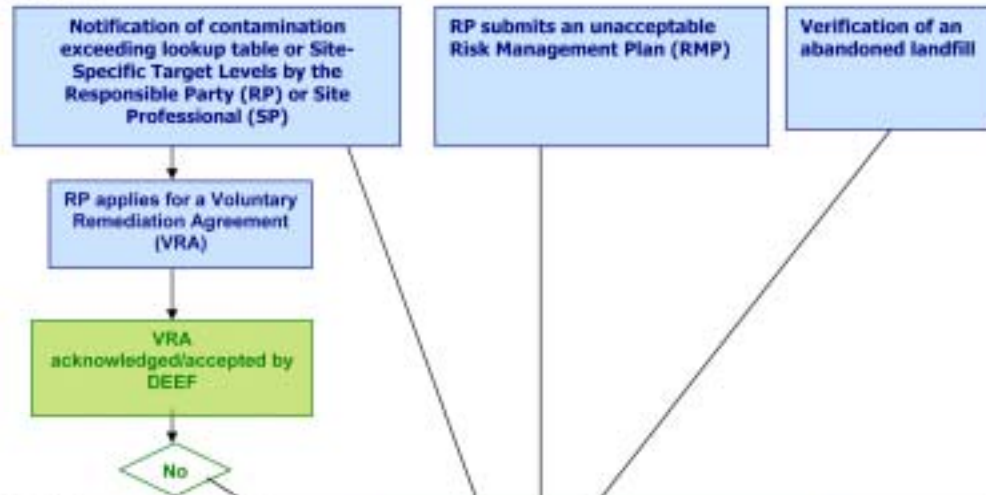
Highlights of Step 1 in Regulation Implementation Process

Exemption of Petroleum Impacted Site on CR

- Where ESA determines screening or Site-Specific Target Levels are exceeded, the RP may complete VRA application on Form 2 of Schedule E in Petroleum Hydrocarbon Remediation Regulations.
- DEEF and RP sign VRA, DEEF shall not entry the site on the Contaminated Site Registry.

DEEF's CONTAMINATED SITE REGISTRY PROCESS

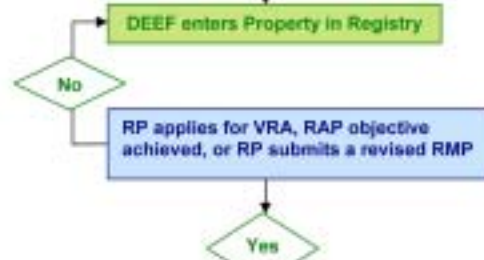
STEP 1



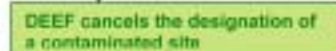
STEP 2



STEP 3



STEP 4



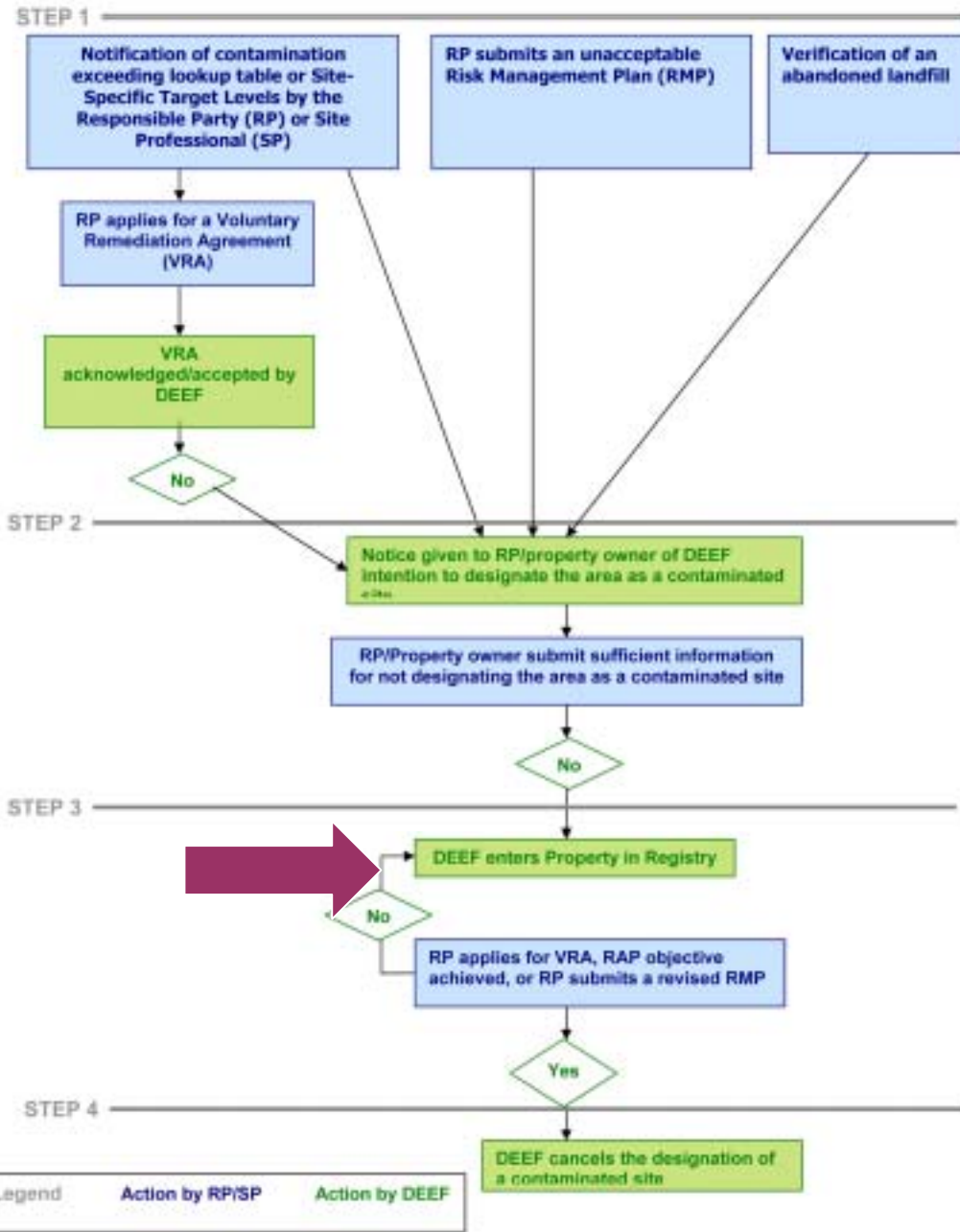
Legend Action by RP/SP Action by DEEF

Highlights of Step 2 in Regulation Implementation Process

As pursuant to Section 21.1(5)(a) and (b) of the *Environmental Protection Act*, before designating a contaminated site,

- *DEEF will give written notice of it's intention to place site on CR, and*
- *Provide reasonable opportunity for site owner, or occupier to comment on the designation.*

DEEF's CONTAMINATED SITE REGISTRY PROCESS



Highlights of Step 3 in Regulation Implementation Process

Department enters Site Registry

Registry
available
online, no
user fees

The screenshot shows the InfoPEI website's 'Contaminated Site Registry' page. At the top, there are navigation tabs for 'Government', 'InfoPEI', 'Business', 'Employment', and 'Visiting the Island'. Below these is a search bar with 'InfoPEI' selected and a 'Search' button. The main heading is 'InfoPEI' with a 'Printer Friendly' icon. The page title is 'Contaminated Site Registry' with a sub-heading 'HOME / TEST WEBSITE -DIRECTORY / CONTAMINATED SITE REGISTRY /'. The main content area features a search form with the text 'Enter a Parcel Identifier (PID)' and a 'Find this Parcel' button. A disclaimer at the bottom states: 'PLEASE NOTE: The inclusion of or reference to any business or organization in InfoPEI is not meant to be an endorsement by the Government of Prince Edward Island of the services offered by any particular business or organization. Further, the Government of Prince Edward Island advises that individual entries are based on information supplied by the business or organization in question. Therefore, while InfoPEI is updated to correct errors as appropriate, the Government of Prince Edward Island does not warrant that the information is accurate.'

Government | InfoPEI | Business | Employment | Visiting the Island

InfoPEI 

[HOME](#) / [TEST WEBSITE -DIRECTORY](#) / [CONTAMINATED SITE REGISTRY](#) /

Contaminated Site Registry

THIS PAGE WILL ASSIST YOU in locating and finding more information about a Prince Edward Island civic address that is in the Contaminated Site Registry.

Enter a Parcel Identifier (PID)

Enter a parcel identifier (PID number) to search the contaminated site registry for information associated with that parcel of property.

Enter PID Number:

[Click here to make corrections to this information.](#)

PLEASE NOTE: The inclusion of or reference to any business or organization in InfoPEI is not meant to be an endorsement by the Government of Prince Edward Island of the services offered by any particular business or organization. Further, the Government of Prince Edward Island advises that individual entries are based on information supplied by the business or organization in question. Therefore, while InfoPEI is updated to correct errors as appropriate, the Government of Prince Edward Island does not warrant that the information is accurate.

The Official Website of the Government of Prince Edward Island, Canada.
Please read our [Copyright and Privacy Policies](#).

Gov. Home

- [Arts, Culture and Heritage -DEV](#)
- [Business, Technology and Immigration](#)
- [Churches](#)
- [Consumer Information](#)
- [Education and Learning](#)
- [Emergency](#)
- [Employment](#)
- [Environment and Land](#)
- [Government](#)
- [Law and Justice](#)
- [Health](#)
- [Life on the Island](#)
- [Media and Communications](#)
- [Moving to Prince Edward Island](#)
- [Nature, Animals and Plants](#)
- [Primary Resources](#)
- [Reference](#)
- [Seniors](#)
- [Service Organizations](#)
- [Statistics](#)
- [Transportation](#)
- [Travel and Vacation](#)
- [Sports & Recreation](#)

News Releases

- [Feedback](#)
- [Printer Friendly View](#)
- [Site Map](#)

Highlights of Step 3 in Regulation Implementation Process

Registry Search Results

The screenshot shows the Prince Edward Island InfoPEI website. At the top, there is a navigation menu with links for Government, InfoPEI, Business, Employment, and Visiting the Island. Below the menu is a search bar with a dropdown menu set to 'InfoPEI' and a 'Search' button. A 'Printer Friendly' icon is visible in the top right corner.

The main content area is titled 'InfoPEI' and includes a breadcrumb trail: 'HOME / TEST WEBSITE - DIRECTORY /'. Below this is the 'Contaminated Site Registry' section, which states: 'THIS PAGE WILL ASSIST YOU in locating and finding more information about a Prince Edward Island civic address that is in the Contaminated Site Registry.'

The section is titled 'Enter a Parcel Identifier (PID)' and includes a form with the label 'Enter PID Number:' and a text input field. Below the input field is a 'Find this Parcel' button.

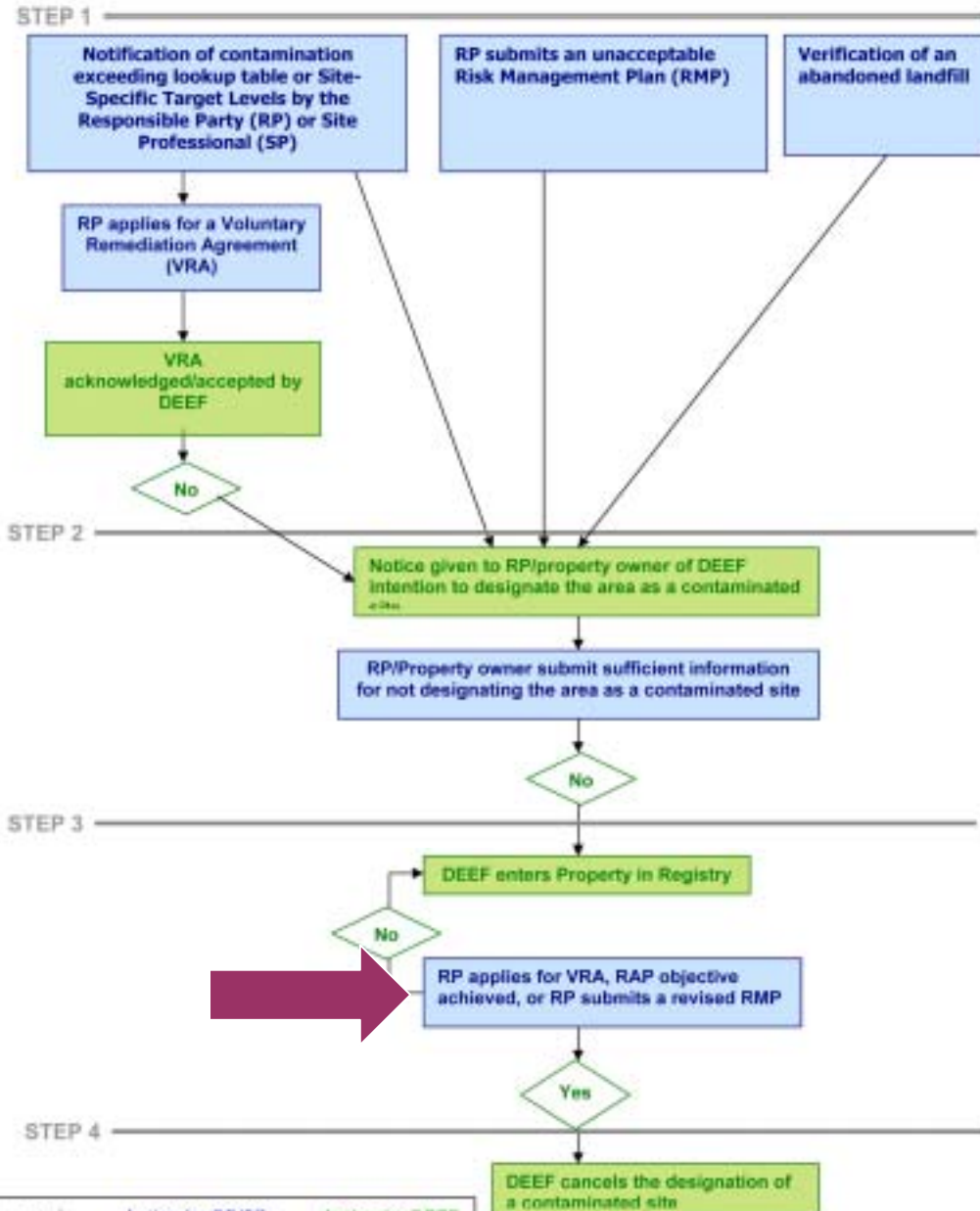
Below the search form, the results are displayed under the heading 'Results of a search for Property ID 542555'. The results are presented in a table with three columns: 'Date entered in registry', 'Comments', and 'Property Documentation'.

Date entered in registry	Comments	Property Documentation
3/10/2006	As per Section 12(2) of the Petroleum Hydrocarbon Remediation Regulations, the Department issued conditional closer imposing limitations on redevelopment of this parcel.	map2006.pdf

At the bottom of the page, there is a note: 'For more detailed environmental information on this and other properties, interested persons may apply under the [Environmental Records Review Regulations](#)'.

On the left side of the screenshot, there is a sidebar with a 'Gov. Home' link and a list of various government services and information categories, including Arts, Culture and Heritage, Business, Technology and Immigration, Churches, Consumer Information, Education and Learning, Emergency, Employment, Environment and Land, Government, Law and Justice, Health, Life on the Island, Media and Communications, Moving to Prince Edward Island, Nature, Animals and Plants, Primary Resources, Reference, Seniors, Service Organizations, Statistics, Transportation, Travel and Vacation, and Sports & Recreation.

DEEF's CONTAMINATED SITE REGISTRY PROCESS

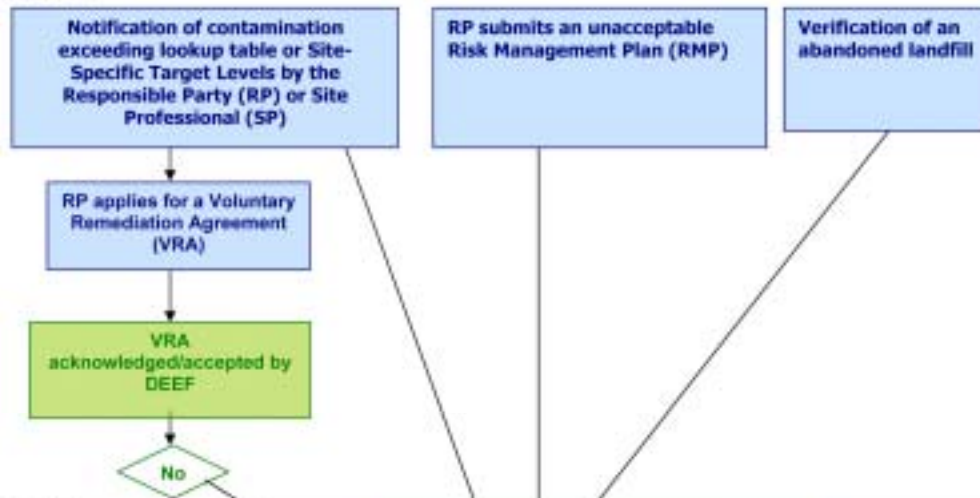


Highlights of Step 3 in Regulation Implementation Process

- Where RP makes VRA application for site on the registry, and no VRA signed, site remains on registry
- Where RP violates VRA, written notification made pursuant to Section 21.1(5)(a) and (b) of the *Environmental Protection Act* of DEEF's intention to designate the site as a contaminated site.

DEEF's CONTAMINATED SITE REGISTRY PROCESS

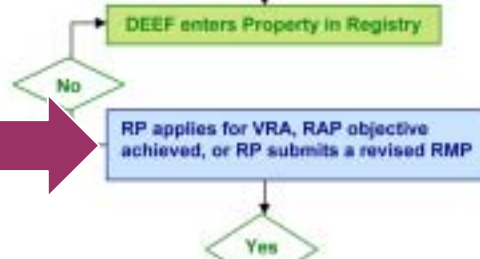
STEP 1



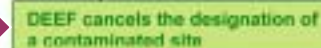
STEP 2



STEP 3



STEP 4



Legend

Action by RP/SP

Action by DEEF

Highlights of Step 3 in Regulation Implementation Process

Where,

- DEEF and RP sign VRA, or
- RAP objectives met, or
- RP submits an acceptable RMP

Site can be removed from registry